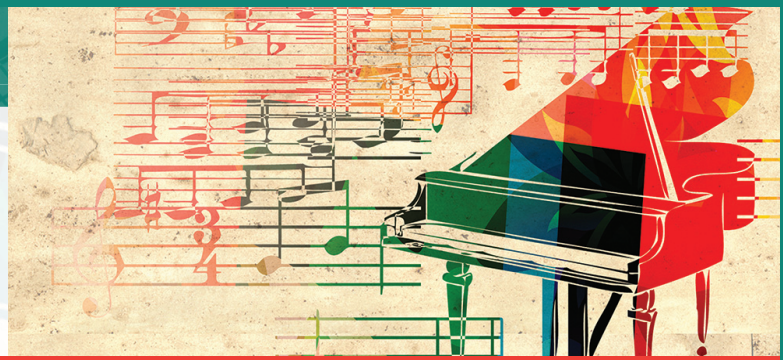


# 2017-2018 SEASON

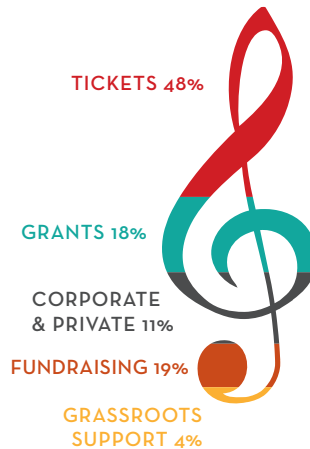
66<sup>TH</sup>  
SEASON

## Daytona Beach Symphony SOCIETY



# SHOW YOUR SUPPORT

We need your help to keep classical music alive and well in Daytona Beach. Ticket sales account for only 48% of our income. The rest comes from corporate and private support, fundraising events, grants and "grassroots" contributions. In addition to bringing the greatest music from around the world to our community, your tax-deductible contribution gives thousands of students a chance to experience symphony orchestras, opera and ballet for the very first time.



*I would like to support the  
Daytona Beach Symphony Society:*

- \$2,000+ Conductor's Circle
- \$1,500+ Grand Maestro Circle
- \$1,000+ Maestro Circle
- \$500+ Virtuoso Circle
- \$350+ Concertmaster Circle
- \$100+ Principal Circle
- \$25+ Soloist Circle

### CONDUCTOR CIRCLE \$2,000

- 2 Class "A" subscriptions to the International Series
- Invitations for two to all post-concert receptions\*
- Listing in concert program, concert inserts and website

### GRAND MAESTRO CIRCLE \$1,500

- 2 Class "B" subscriptions to the International Series
- Invitations for two to all post-concert receptions\*
- Listing in concert program, concert inserts and website

### MAESTRO CIRCLE \$1,000

- 4 Class "B" tickets to one International Series concert
- Invitations for two to all post-concert receptions\*
- Listing in concert program, concert inserts and website

### VIRTUOSO CIRCLE \$500

- 2 Class "B" tickets to one International Series concert
- Invitations for two to all post-concert receptions\*
- Listing in concert program, concert inserts and website

### CONCERTMASTER CIRCLE \$350

- Invitations for two to all post-concert receptions\*
- Listing in concert program, concert inserts and website

### PRINCIPAL CIRCLE \$100

- Listing in concert program, concert inserts and website

### SOLOIST CIRCLE \$25

- Listing in concert program, concert inserts and website

\* At the post-concert receptions you'll enjoy meeting the performers, conductors and other Society contributors. Contributions received after the concert program goes to press will be recognized in the concert inserts.

NAME \_\_\_\_\_

ADDRESS \_\_\_\_\_

CITY \_\_\_\_\_

STATE \_\_\_\_\_

ZIP \_\_\_\_\_

PHONE \_\_\_\_\_

E-MAIL \_\_\_\_\_

*Please bill my credit card*

CARD NUMBER \_\_\_\_\_

EXP. DATE \_\_\_\_\_

SIGNATURE \_\_\_\_\_

*I've enclosed a check payable to the Daytona Beach  
Symphony Society. I would like my name to appear as:*

MAIL: PO BOX 2, DAYTONA BEACH, FL 32115

PHONE: 386.253.2901

FAX: 386.253.5774

EMAIL: INFO@DBSS.ORG

Gifts to the Symphony Society are deductible for income tax purposes. Certain benefits may not be tax-deductible. Please inquire. A copy of the official registration and financial information may be obtained from the Division of Consumer Services by calling toll-free within the state (800-435-7352). Registration does not imply endorsement, approval or recommendation by the state.

## FOR MORE INFORMATION CALL 386.253.2901 OR VISIT DBSS.ORG